

**HIGH-SPEED**



**TRANSPORTATION**

**Dallas-Fort Worth**



**North Central Texas  
Council of Governments**



# 2023 Open House Series

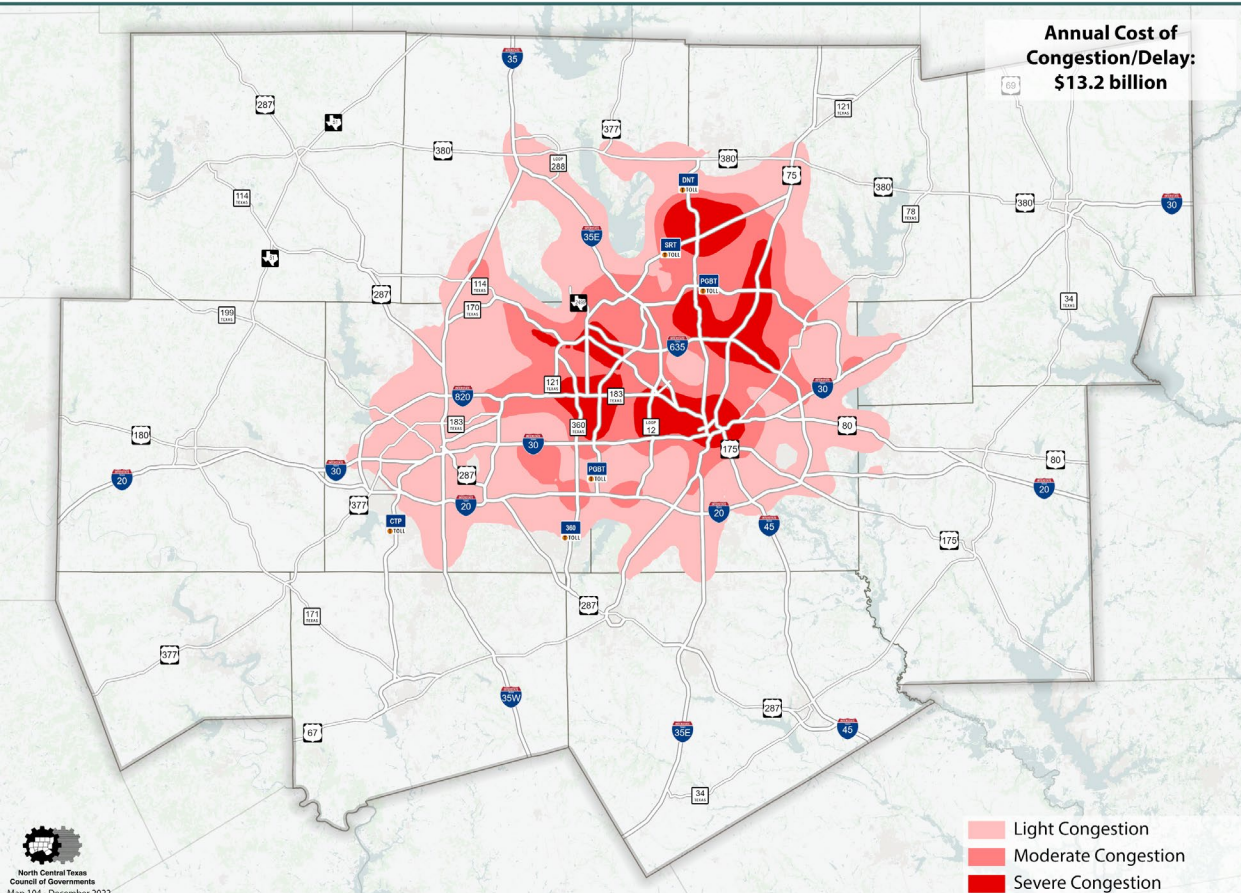
---

- Purpose
  - Project Status Update
  - Next Steps
  - Opportunity for Comment
- Additional Detailed Project Information:
  - Exhibit Boards
  - Roll Plots of Alignment
  - Handouts
  - Other Project Resources

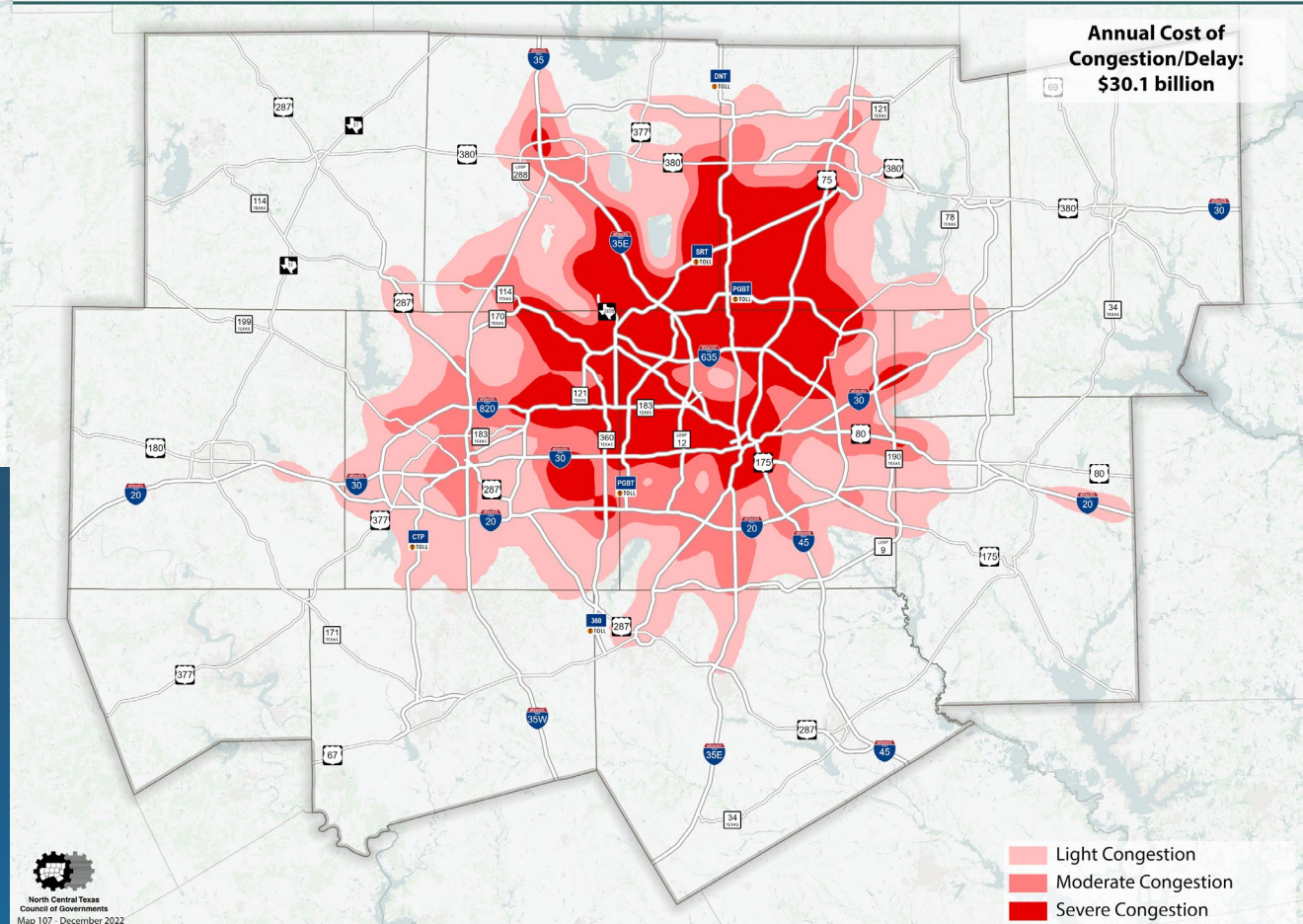
# Study Purpose and Overview

The background features a dark blue gradient with several large, overlapping geometric shapes in various shades of blue. These shapes include a large triangle on the right side and several parallel lines and curved shapes that create a sense of depth and movement.





# Dallas – Fort Worth Metropolitan Area



## Increase in Congestion



# Purpose and Need

Creating:

- More travel options
- Increased connectivity
- Less demand on roadways
- More reliable travel times
- Better air quality

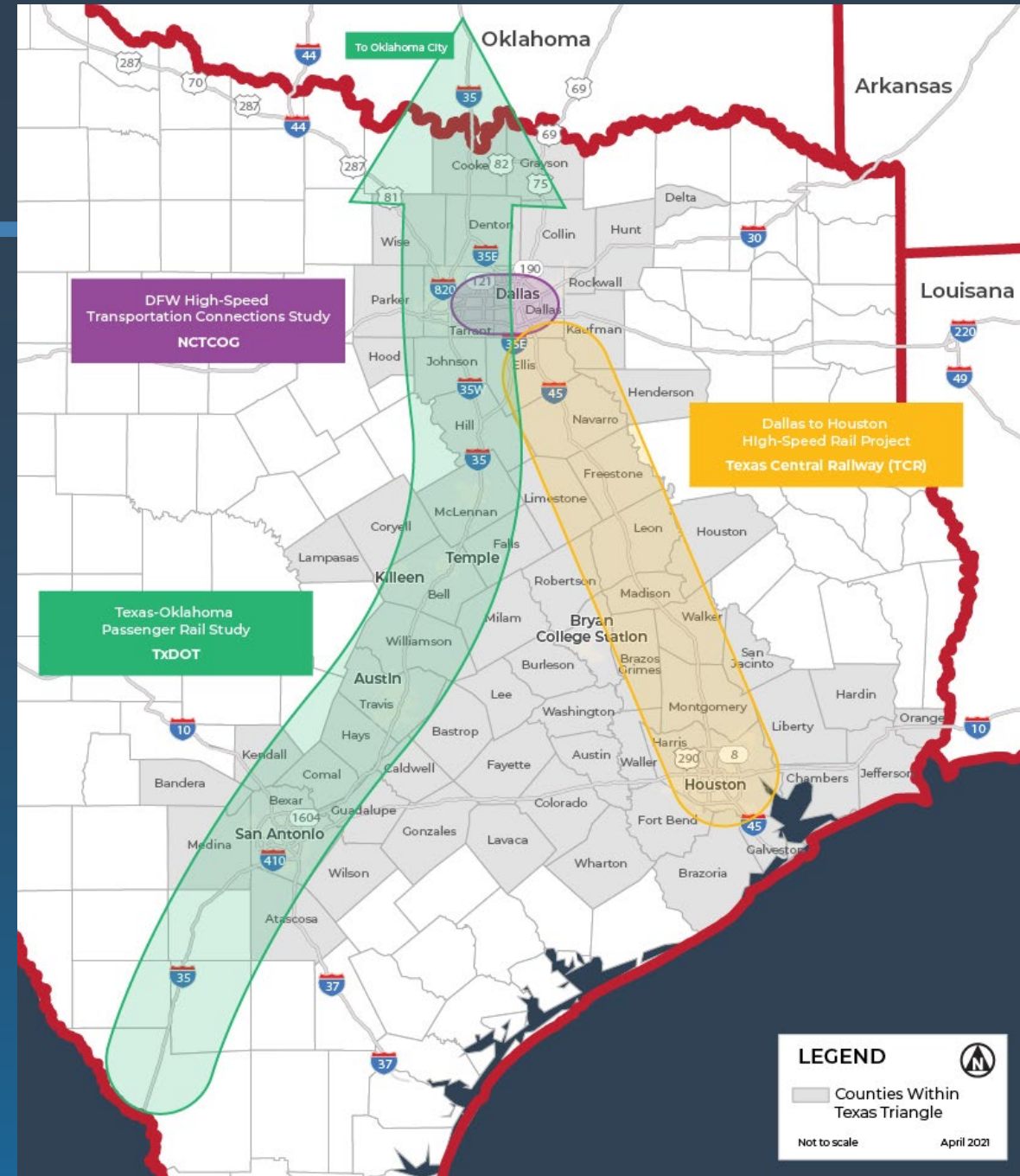




# Statewide Connectivity

Evaluate high-speed transportation alternatives (both alignments and technology) to:

- Connect Dallas-Fort Worth to other proposed high-performance passenger systems in the state
- Enhance and connect the Dallas-Fort Worth regional transportation system



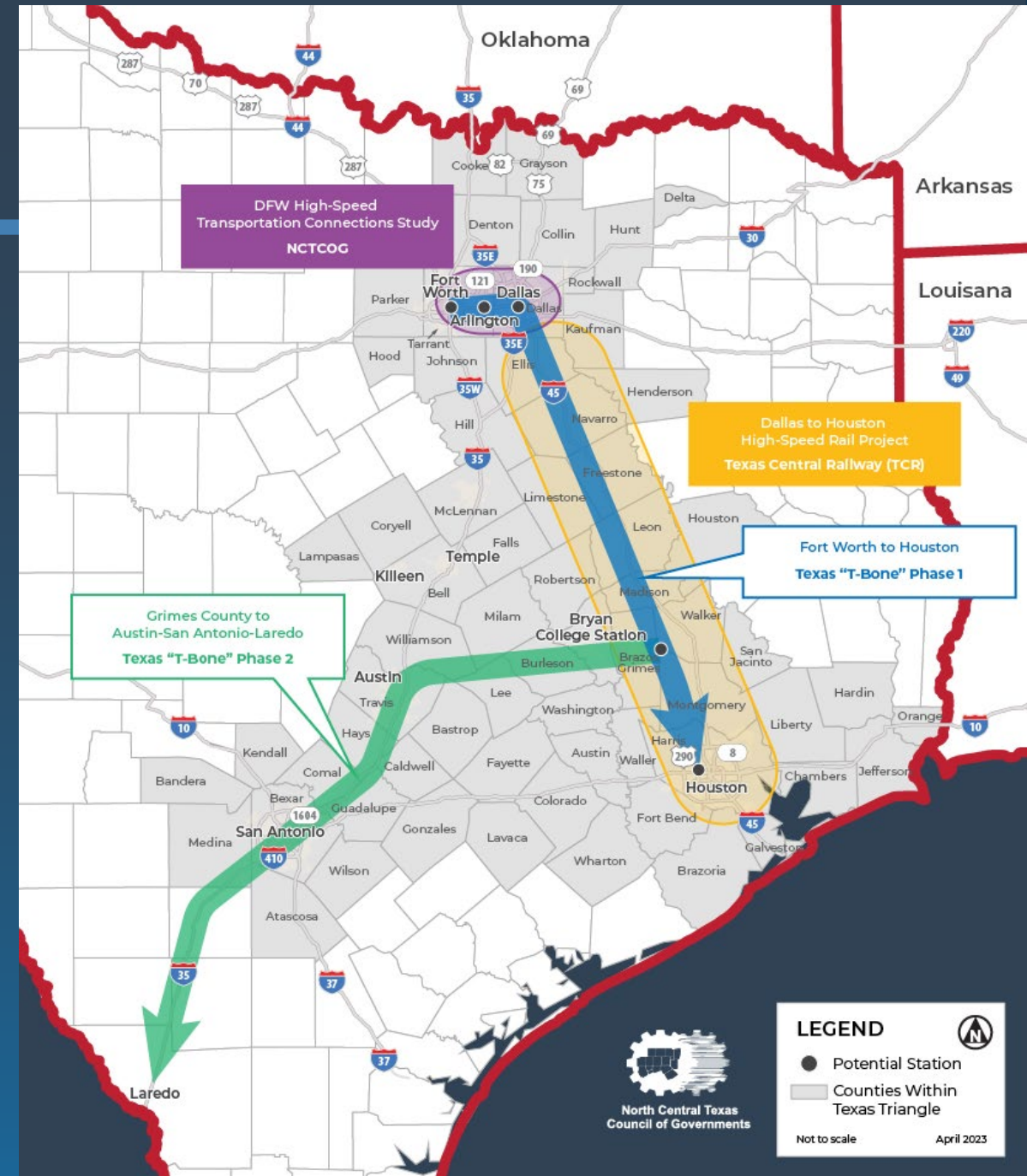
# Texas "T-Bone" HSR System Option

Alternative to Upside Down U system option

Phase 1: Fort Worth to Houston HSR

Phase 2: Grimes County (Bryan-College Station) to Austin-San Antonio-Laredo HSR

Does not preclude future Fort Worth to Austin-San Antonio-Laredo High-Speed project





# Study Overview

## Phase 1 – Alternative Development

- Public and Agency Engagement
- Alternative Development
- Alternative Screening

**COMPLETE**

Goal for Phase 1  
Identify technologies and alignments to be carried into Phase 2

## Phase 2 – Engineering & Environmental

- Conceptual Engineering
- National Environmental Policy Act Documentation and Approval
- Preliminary Engineering
- Financial and Project Management Plans
- Public and Agency Engagement

**I-30 Corridor + High-Speed Rail**

Goal for Phase 2  
Federal environmental approval of alignment & technology



# Your Part in DFWHSTC

Comment forms available  
Share your concerns,  
excitement and questions

Interactive Online Public  
Comment Form →

Open Project Documents ▾

1) Tell us about yourself and stay up to date with the project

Zip Code \* Required Last Name \* Required

2) Select any of the following topics that apply to your comment: (Select up to 3)


3) Below, you will find a map with the remaining alignments. On the left side of the map, you can toggle through layers to hide or show individual alignments, so you can review each one separately. In your review of the alignments, do you have any areas of concern? Please explain in detail. \* Required

*Please do not place any personally identifiable information (name, phone, or email) within your comment.*

4) Would you like a response to your question or concern?

5) To drop a pin on an area of concern, tap the location. If you drop one in a wrong location, click the correct location to move your existing pin on the map. Only one pin can be dropped on the map at a time. If zoomed in, please use arrow keys to pan around the map, or use the + or - keys to zoom in and out.

Tap another location to move your pin. Use arrow keys to pan around. Use + or - keys to zoom in and out.



The background features a dark blue gradient with several abstract, overlapping geometric shapes in various shades of blue. These shapes include a large triangle on the right side and several parallel, slanted lines that create a sense of depth and movement.

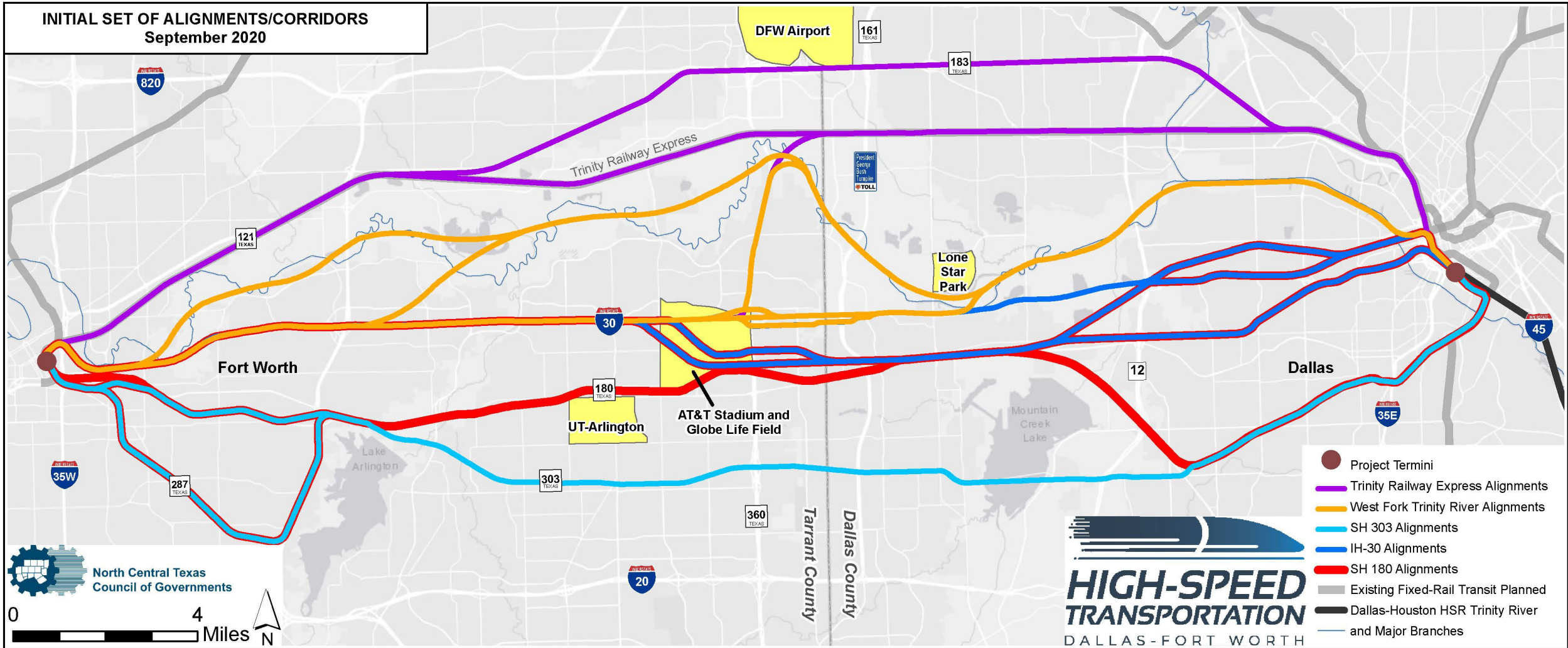
# Overview of Phase 1

---

## Efforts and Recommendations

# Initial Set of Alignments/Corridors

INITIAL SET OF ALIGNMENTS/CORRIDORS  
September 2020





# Initial Modes

● Conventional



● Higher-Speed



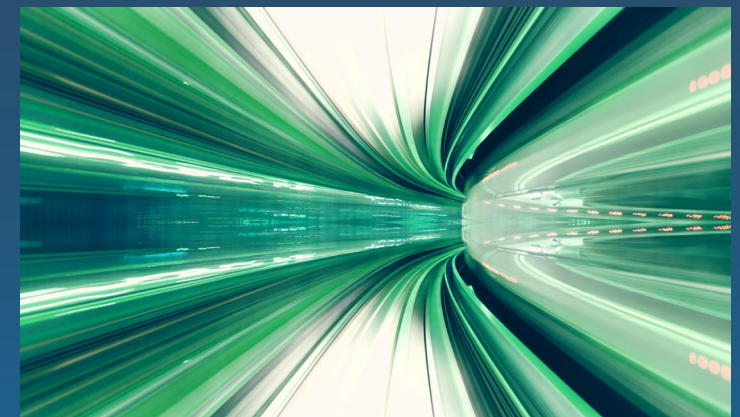
● High-Speed



● Maglev



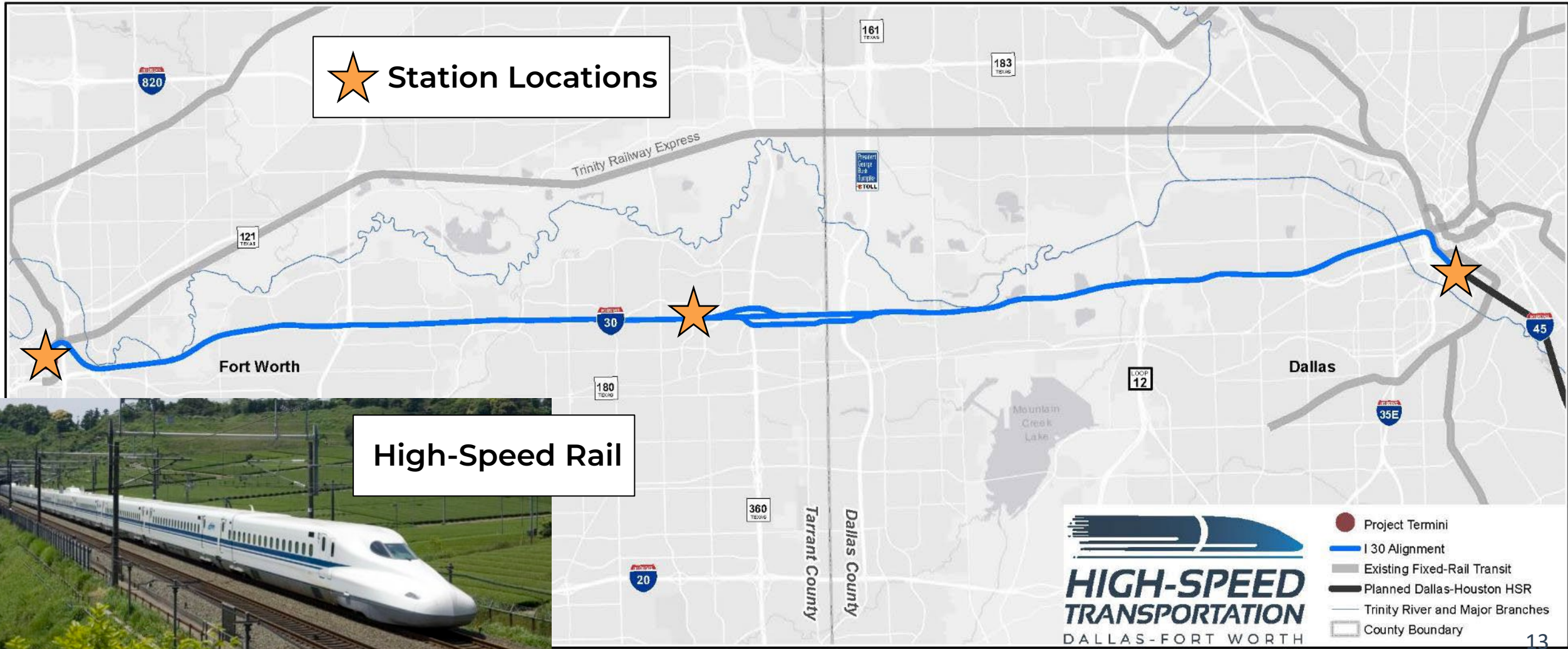
● Hyperloop



● Emerging Technologies



# Phase 1 Recommendations



# Benefits of HSR

- One-seat ride from Fort Worth to Houston
- Reduces carbon output
- Less sensitive to inclement weather
- Grade separated



# Phase 2: Engineering and Environmental

The background features several abstract, overlapping geometric shapes in various shades of blue. These shapes include a large triangle on the right side, several parallel diagonal lines, and a series of vertical, rounded rectangular bars at the bottom right, resembling a stylized architectural or engineering drawing.



# Phase 2 Activities

---

Continued Coordination with:

- Federal, state, and local agencies;

- Local governments, and stakeholders

Preliminary Engineering

Environmental Analysis and Documentation

Financial and Project Management Plans

Public and Agency Engagement



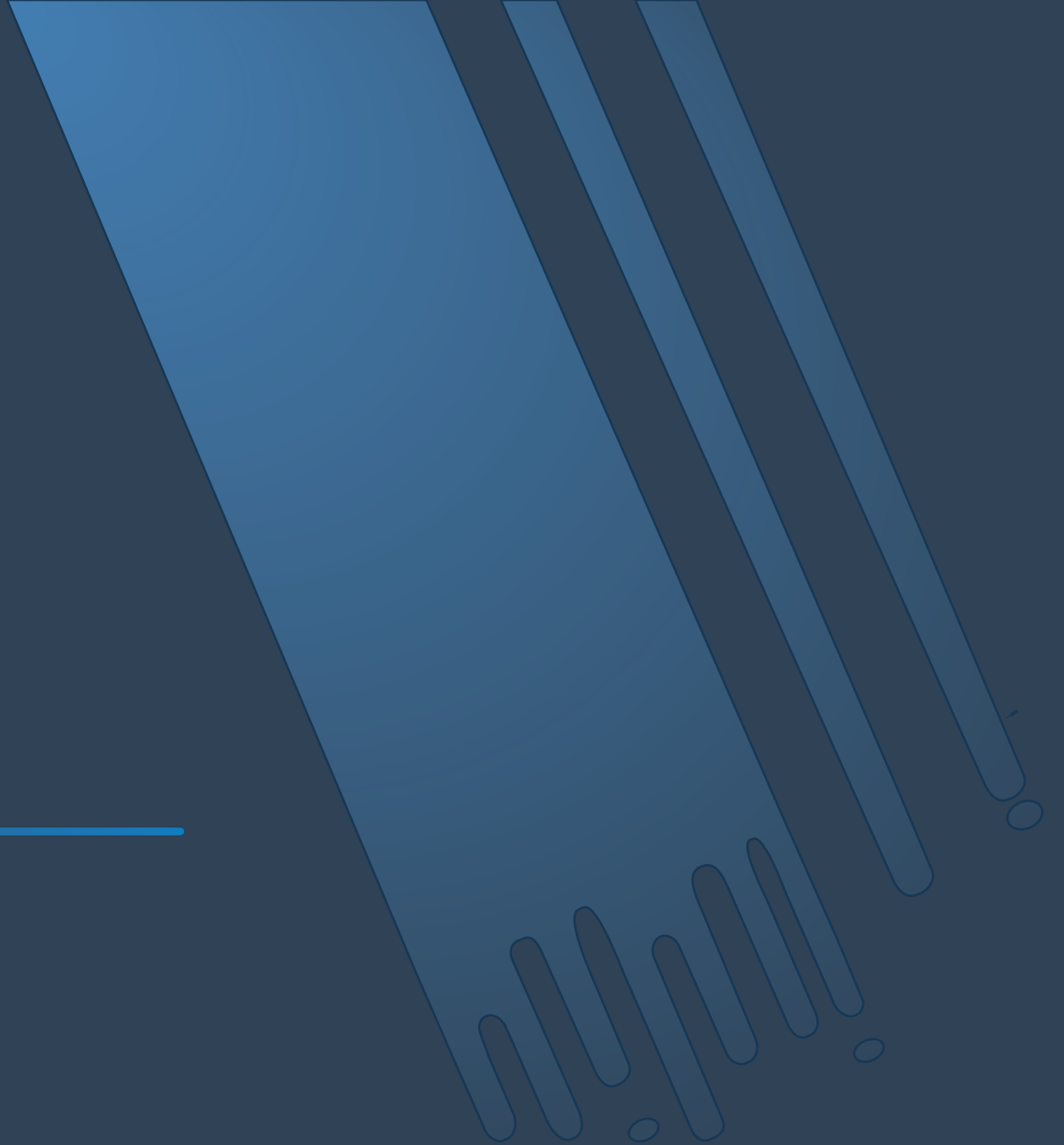
# National Environmental Policy Act

- Community Effects
- Noise & Vibration
- Cultural Resources
- Natural Resources
- Air Quality
- Parks and Recreational Sites
- Transportation
- Regulated Materials
- Utilities and Energy
- Indirect and Cumulative Effects



# Next Steps

---



# Project Timeline

- Phase 2 Completion
- NEPA Document Finalized and Approved
- Implementing agency identified
- Funding Identified
- Construction
- High-Speed Rail in North Texas!



# Stay Connected to DFWHSTC

## Project Website Link

[www.nctcog.org/dfw-hstcs](http://www.nctcog.org/dfw-hstcs)

*For future public meeting dates, please monitor the project website.*

The screenshot shows the website for the North Central Texas Council of Governments. The header includes the organization's name, a search bar, and navigation links. The main content area features a breadcrumb trail: Home > Transportation > Regional Planning & Projects > Transit Management and Planning > General Public Information > Transit Planning Activities > Transit Planning Projects > High-Speed Rail > DFW High-Speed Transportation Connections Study. The title of the page is "DFW High-Speed Transportation Connections Study". Below the title, it states "Current study of high-speed options Dallas to Fort Worth:" followed by a list of study activities: Analyzing Potential Routes, Evaluating Potential Vehicles, Developing Operations/Service Plans, Preparing Preliminary Engineering, and Compiling Environmental Documentation. To the right of the list is a logo for "HIGH-SPEED TRANSPORTATION DALLAS-FORT WORTH". Below the list, a paragraph explains that the study was initiated in the spring of 2020 to evaluate high-speed transportation between Dallas and Fort Worth, with a goal of connecting to other proposed high-performance passenger systems. It also mentions that other regional high-speed efforts can be found on NCTCOG's High-Speed Rail webpage. On the right side of the page, there is a vertical navigation menu with dropdown arrows for: Regional Planning & Projects, Congestion Management, Maps, Models & Data, Quality of Life, Funding & Business, and Plans, Studies,.





# Additional Outreach

---

- Project team is available to speak at events or to groups within the project study area
- Please contact us with meeting requests or outreach suggestions!

Rebekah Gongora  
Communications Manager  
682.433.0477  
rgongora@nctcog.org

# Thank you for your interest and time!

Online Comment Form and Project Information:

[www.nctcog.org/dfw-hstcs](http://www.nctcog.org/dfw-hstcs)

General Questions:

Email [HST\\_DFW@nctcog.org](mailto:HST_DFW@nctcog.org)

